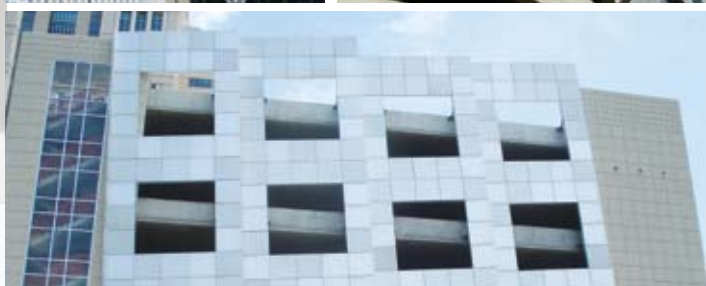


720 Olive Street - Suite 450  
 St. Louis, MO 63101  
 314.436.6500 (phone)  
 314.436.1646 (fax)  
 www.downtownstl.org

THE PARTNERSHIP for  
 DOWNTOWN ST. LOUIS

DOWNTOWN COMMUNITY  
 IMPROVEMENT DISTRICT



## DOWNTOWN, ST. LOUIS



## DOWNTOWN PARKING GUIDE

downtownstl.org



## ON-STREET PARKING

- Downtown meters are enforced Monday through Friday, 8:00 am to 7:00 pm.
- Observe signs for additional restrictions.
- Free metered parking in downtown on Saturdays, Sundays and Holidays.

## ON-STREET RATES

**\$1.00 per Hour**  
**25¢ per 15 Minutes**

There are over 3,275 time-restricted curbside parking spaces available throughout the downtown area.

Please read the signs to confirm the meter time limit.

15 minute, 1 hour and 2 hour time limits are in effect at various locations.

To reserve a parking space, refer to the list of owners in this brochure.

For pricing on daily, monthly or special event parking or for more copies of this guide, contact 314.436.6500 ext. 240.



## Index Of PARKING FACILITIES

**Blue = Surface Parking**

**Red = Garage and In-Building Parking**

### Downtown Parking Contacts

Central Parking (CP)	314-421-4063
CitiPark (Citi)	314-241-1918
City of St. Louis (City)	314-622-4414
InterPark (IP)	314-421-2613
S&H Parking (S&H)	314-621-1600
St. Louis Parking (SLP)	314-241-7777
Union Services (US)	314-421-4370
St. Louis RV Park	314-241-3330

- 1 Levee Parking (SLP)
- 2 Arch Garage (Metro)
- 3 First & Lucas (SLP)
- 4 CitiPark Lot (Citi)
- 5 Riverfront Garage (SLP)
- 6 Laclede's Landing Lot (SLP)
- 7 C - Lot (SLP)
- 8 20th & Locust Lot (SLP)
- 9 909 North First
- 10 2nd & Carr (S&H)
- 11 1st & Carr (CP)
- 12 1st & Carr (SLP)
- 13 1st & Biddle (SLP)
- 14 627 South 6th Street (CP)
- 15 Second & Cass Lot (SLP)
- 16 Ninth Street Garage (SLP)
- 17 Broadway & Lucas (SLP)
- 18 MAC Garage (SLP)
- 19 Hampton Inn Lot (SLP)
- 20 Hampton Inn Garage (SLP)
- 21 MAC Lot (SLP)
- 22 500 Broadway Building (CP)
- 23 Mansion House (SLP)
- 24 QuikPark (Citi)
- 25 St. Louis Place (IP)
- 26 Bank of America Tower (SLP)
- 27 Hyatt Regency STL Riverfront
- 28 Stadium East (IP)
- 29 500 South Broadway (S&H)
- 30 15th & Lucas (S&H)
- 31 4th & Poplar (S&H)
- 32 Broadway & Cerre (SLP)
- 33 4th & Poplar (S&H)

- 34 4th & Cerre (S&H)
- 35 Broadway & Gratiot (S&H)
- 36 Broadway & Cerre (SLP)
- 37 Gratiot & 6th (S&H)
- 38 7th & Cerre (STL)
- 39 Amtrack Long-Term Parking (SLP) (Overnight Parking)
- 40 718 South 6th Street (USP)
- 41 Seventh Street Garage (SLP) Opening 2011
- 42 8th & Poplar (CP)
- 43 St. Patrick's Center Lots (SLP)
- 44 One Bell Center
- 45 1401 Delmar
- 46 One South Broadway (Hilton at the Ballpark)
- 47 City Museum
- 48 Gateway One Garage (SLP)
- 49 Kiener West Garage (IP)
- 50 Kiener East Garage (IP)
- 51 Metropolitan Square Building (CP)
- 52 6th & Olive (CP)
- 53 Macy's Central (CP)
- 54 Laclede Gas Building (CP)
- 55 7th & Pine Garage (City)
- 56 705 Park - 7th & Locust
- 57 Center Park Garage (Broadway & Locust) (SLP)
- 58 St. Louis Centre East (SLP)
- 59 US Bank Plaza Garage (SLP)
- 60 Drury Inn/CitiPark (Citi)
- 61 6th & Convention Lot (SLP)
- 62 America's Garage (SLP)
- 63 C-9 Garage (CP)
- 64 1800 Washington (S&H)
- 65 911 Garage (SLP)
- 66 12th & Cole Lot (SLP)
- 67 Post Dispatch Lots (STP)
- 68 4th & Cedar Lot (SLP)
- 69 427 South 15th (USP)
- 70 Tucker & Gay Streets (S&H)
- 71 The Globe Building
- 72 1010 Convention Plaza (SLP)
- 73 10th & Lucas
- 74 SLCCH Garage (SLP)
- 75 Williams Paper Co. Lot (City)
- 76 Justice Center Garage (City)
- 77 Tucker & St. Charles (SLP)
- 78 306 North Tucker (CP)

- 79 13th & Convention (S&H)
- 80 13th & Martin Luther King (CP)
- 81 10th & Pine Lot (SLP)
- 82 1400 Martin Luther King Drive (S&H)
- 83 11th & Pine Lot (SLP)
- 84 Stadium West (IP)
- 85 16th & Lucas
- 86 Municipal Garage (City)
- 87 11th & Clark Lot (SLP)
- 88 Cupples (Valentine Lot) (SLP)
- 89 City Block 426 (SLP)
- 90 Cupples Lot - 10th & Spruce (SLP)
- 91 Cupples Lot (Westin Hotel) (SLP)
- 92 Cupples Station Garage (City)
- 93 11th & Poplar (US)
- 94 St. Louis Sheraton City Ctr (CP)
- 95 13th & Spruce (CP)
- 96 1303 Spruce (USP)
- 97 Municiple Parking Plaza (City)
- 98 Ballpark Village (CP)
- 99 14th & Delmar (CP)
- 100 14th & Lucas (CP)
- 101 417 South 15th (USP)
- 102 14th & Locust (CP)
- 103 Kiel Center Garage (City)
- 104 16th & Clark (SLP)
- 105 Union Station - South Lot (SLP)
- 106 Drury Inn St. Louis Union Station (Citi)
- 107 Union Station - West Lot (SLP)
- 108 20th & Chestnut East Lot (SLP)
- 109 20th & Chestnut West Lot (SLP)
- 110 18th & Chestnut Garage (SLP)
- 111 Plaza Square Garage
- 112 15th & Pine (S&H)
- 113 Parkside Lot (SLP)
- 114 Parkside Garage (SLP)
- 115 7th & Cerre (SLP)
- 116 1215 Olive Lot (SLP)
- 117 16th & Olive (S&H)
- 118 1409 Washington (S&H)
- 119 1601 Locust Street (CP)
- 120 Chouteau's Landing (SLP)
- 121 6th & LaSalle Lot (SLP)
- 122 6th & Cole (STP)
- 123 7th & Chouteau



# PUBLIC PARKING DOWNTOWN ST. LOUIS




To reserve a parking space, refer to the list of owners in this brochure.  
For pricing on daily, monthly or special event parking, contact 314.436.6500 ext: 240.



**M** METRO **P** PUBLIC PARKING

© 2010 Partnership for Downtown St. Louis.  
This map may not be reproduced without the prior written permission of the Partnership for Downtown St. Louis.

# DOWNTOWN TROLLEY

-  Trolley Stops
-  Trolley Route
-  MetroLink Stations



## DOWNTOWN TROLLEY SCHEDULE

<b>MON</b> to <b>FRI</b>	5:30AM - 7AM	EVERY 20 MIN.
	7AM - 6PM	EVERY 10 MIN.
<b>SAT</b>	6PM - MIDNIGHT	EVERY 20 MIN.
	7AM - MIDNIGHT	EVERY 20 MIN.

## TROLLEY ONE-DAY TICKET

-  Adults
-  Children, Seniors and Disabled

UNLIMITED USE ALL DAY

Tickets sold on the trolley or at the MetroRide Store at 7th and Washington

Visit [metrotrouis.org](http://metrotrouis.org) or call (314) 231-2345 for more information

# Transportation

## MetroLink

St. Louis' light rail system, MetroLink, has been called one of the best mass transit systems in the country. The clean, efficient trains are a big hit with visitors and locals alike who want to see many of St. Louis' attractions without a car. The system – which begins at Lambert-St. Louis International Airport and covers 48 miles – ends in suburban Belleville, Illinois at Scott Air Force Base/Shiloh and stops at 37 Missouri and Illinois stations in between.

MetroLink's trains pull into stations near many of St. Louis' visitor attractions. These stations, listed in bold, are near the following attractions: **Sunnen** – Transportation Museum, Magic House, Repertory Theatre of St. Louis via MetroBus connection; **Clayton** – Shaw Park, dining, hotels, shopping; **Skinker** – Washington University, Edison Theatre, Mildred Lane Kemper Museum of Art; **UM St. Louis North** – University of Missouri St. Louis, Blanche M. Touhill Performing Arts Center, Mercantile Library; **Delmar/Loop** – St. Louis Walk of Fame, The Loop neighborhood; **Forest Park** – Zoo, Art Museum, History Museum, Science Center; **Central West End** – Central West End neighborhood, restaurants, Cathedral Basilica of Saint Louis; **Grand** – Saint Louis University, Cupples House, Museum of Contemporary Religious Art, Grand Center entertainment district theaters, Pulitzer Foundation for the Arts, Contemporary Art Museum; **Union Station** – Union Station festival marketplace, restaurants, entertainment, hotels; **Civic Center** – Scottrade Center arena, City Hall, hotels; **Stadium** – Busch Stadium, hotels; **8th & Pine** – Central downtown,

restaurants, Kiener Plaza, Old Courthouse, hotels; **Convention Center** – America's Center® convention complex, Edward Jones Dome, hotels; **Arch/Laclede's Landing** – Lumière Place, historic district, entertainment, President Casino, restaurants, Gateway Arch, riverboat cruises, hotels; **East Riverfront** – Casino Queen

A one-way ride on MetroLink costs \$2.25. Tickets may be purchased and validated at each station. Tickets from the airport station to downtown St. Louis cost \$3.75. Day Passes for MetroLink and MetroBus are \$7.50. Trains run every seven minutes during rush hours, every 10 minutes during non-rush hours and every 15 minutes in the evening during the week. For schedule information, dial (314) 231-2345. TTY: (314) 982-1555

## MetroBus Shuttles

Getting around town is a snap. To provide increased access for conventioners and tourists to more of St. Louis' attractions, Metro has developed a single route (**#93 Mid Town South County**) that now serves primary downtown hotels and connects many significant tourist venues including Soulard, the Anheuser-Busch Brewery, City Museum, the Hill, the Missouri Botanical Garden, Euclid Avenue and the Central West End, Cathedral Basilica of St. Louis, and Grand Center. And year-round, the #90 Hampton MetroBus route continues to serve many of the attractions in Forest Park. Adult one-ride MetroBus fare begins at \$2.00. Please consult [www.metrostlouis.org](http://www.metrostlouis.org) for routes and schedule information.

## MetroBus

The Bi-State system serves most areas of St. Louis and St. Louis County. Call the Transit Information Center (314) 231-2345, Monday through Friday, or visit the MetroRide store in the Visitor Information Center at Seventh Street and Washington Avenue in downtown St. Louis from 8:30 a.m.-5 p.m. Buses generally run from 4 a.m. until 2 a.m. The fare is \$2.00. Greyhound Bus Lines, (314) 231-4485 or (800) 231-2222, operates service to and from the Gateway Transportation Center located on South 15<sup>th</sup> Street.